



cedar network



## How to make a good Cedar referral: useful information

To make a referral to your local Cedar Project, we're looking for the following information about the family you're referring:

Up-to-date basic details, including names, dates of birth, addresses and child's school contact.

Details about any contact the child has had with the person who caused the risk (frequency and timescales).

Details about impact (emotional and behavioural) on the child of any contact with the person who caused the risk.

Details about the family's experience of domestic abuse, particularly the child's.

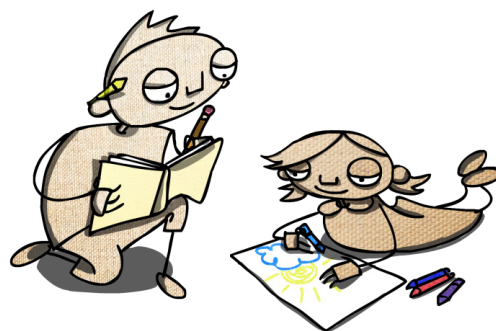
Whether the child has disclosed memories of their experiences and, if so, how they articulated this.

Details of other agency input, particularly the child's school.

Whether there is any known current risk of further domestic abuse, particularly ongoing criminal/civil court proceedings relating to contact/custody of children.

Confirmation that you've discussed the referral with the family and have their consent to refer.

Confirmation that the child wants to take part in Cedar.



Finally, for more information and for your local Project's contact details please visit [www.cedarnetwork.org.uk](http://www.cedarnetwork.org.uk)